

ETERNA

L I G H T I N G



MISSION STATEMENT

Eterna Lighting, a family-owned business for twenty + years, is committed to the very highest quality lighting, designed specially for the woodworking, store fixture and display industry. Our line includes products that conform to both UL and ETL standards as well as energy conscious products such as our Compact Fluorescent GU-10 and LED fixtures. All Eterna Lighting products are thoroughly tested for superior quality and maximum efficiency

To better serve our customers, Eterna Lighting has a dependable and knowledgeable staff dedicated to excellence in customer service. We are pleased to offer our customers a rewarding partnership with Eterna Lighting. Through innovation, experience and new and exciting technology, we offer a specification driven product line that will ensure the right application for your lighting needs.

We at Eterna Lighting thank you for choosing us. We will continue to work hard for your business.

Eterna Lighting

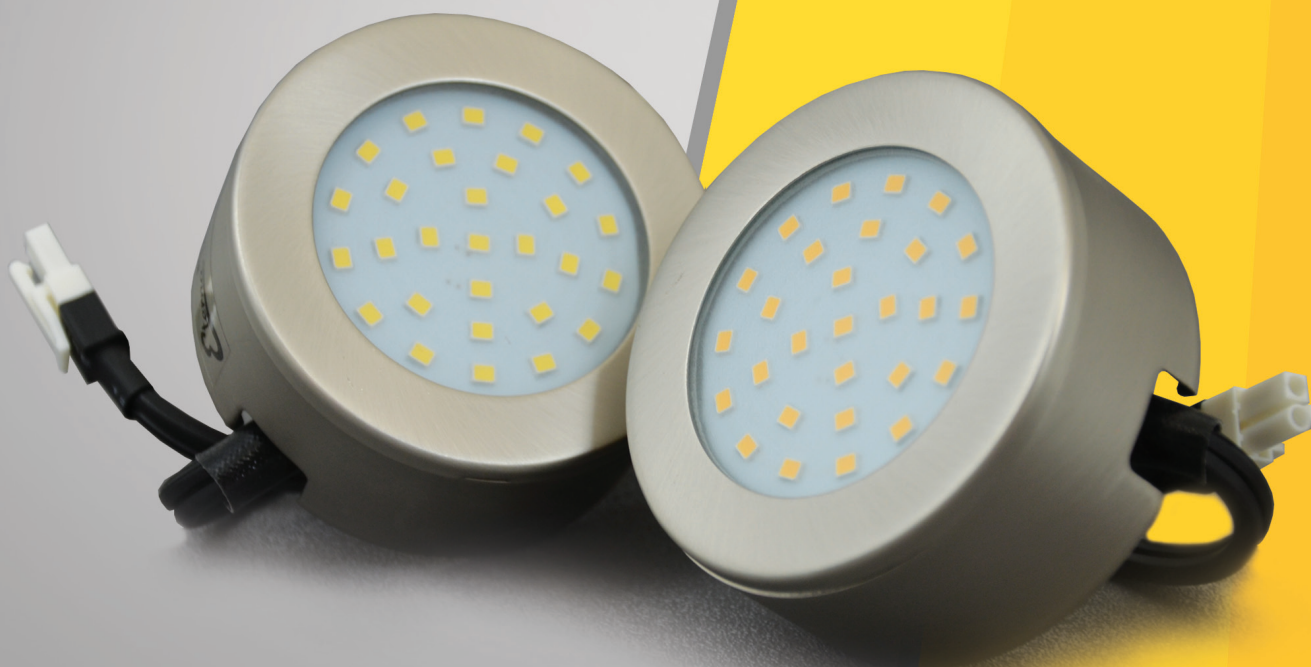




Table of Contents

120V 3" MINI COLLECTION TRIM.....	1
120V 3" MINI COLLECTION CAN.....	2
120V GU-10 LED SPRING LOADED.....	3
120V GU-CLED LED SPRING LOADED.....	4
120V XHL-LED INFINITY PUCK LIGHT.....	5
12 V SQHL & SHL LED SPRING LOADED SERIES.....	6
12 V MMSQ & MSQ SERIES SPRING LOADED SERIES.....	7
12 V XFHL-LED PUCK LIGHT SERIES.....	8
24 V LED BAR SERIES.....	9
24 V LED BAR ACCESSORIES AND TRANSFORMERS.....	10
24 V LED TAPE LIGHT SERIES.....	11
LED EXTRUSIONS AND ACCESSORIES.....	12
LED TAPE ACCESSORIES.....	13
LED BAR AND TAPE ACCESSORIES.....	14
12-24 TRANSFORMERS SERIES.....	15
12-24 TRANSFORMERS SERIES.....	16
LED T4 SLIM LINE SERIES FLUORESCENTS.....	17
SL-T5 SLIM LINE FLUORESCENTS.....	18
LED-T8 SLIM LINE SERIES.....	19
C3I COMPATIBLE ACCESSORIES.....	20
LED MILLWORK LIGHTING ACCESSORIES.....	21
ETERNA BULBS SERIES.....	22
SORAA BULBS SERIES.....	23





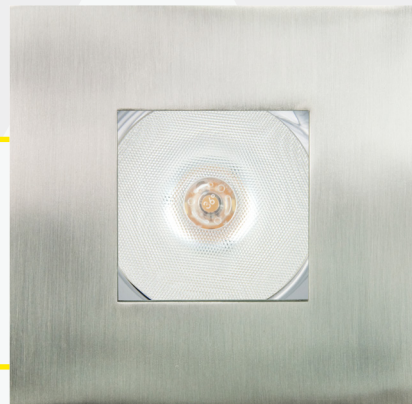
GU-3RA-WH • GU-3RA-BN



GU-3SQA-BN • GU-3SQA-WH



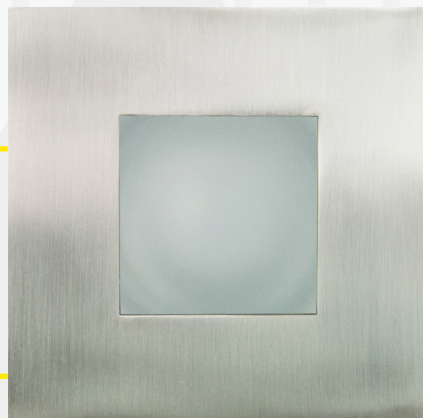
GU-3RP-WH • GU-3RP-BN



GU-3SQP-BN • GU-3SQP-WH



GU-3RRS-WH • GU-3RRS-BN



GU-3SQSS-BN • GU-3SQSS-WH



120V 3" Mini Collection

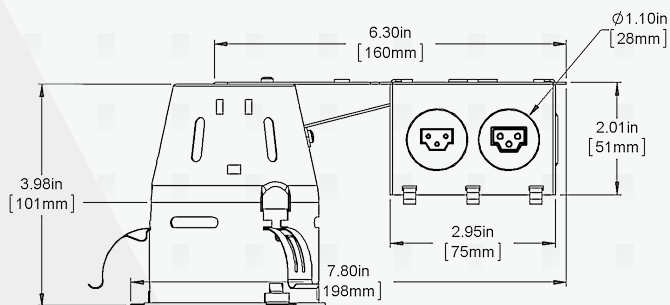


Product Description:

A highly anticipated shallow recessed mini recessed fixture available in remodel, new construction, or IC rated applications where insulated ceiling are a factor. This fixture is 120V-GU10 based and can use both standard knockout connectors and our C3I interconnecting system to link fixtures in series. 6 Different stylized adjustable and non-adjustable round and square trims will accept halogen or LED bulbs while also being able to hold a diffuser, eggcrate louver, or spread lens...Available in White and Brushed Nickel.

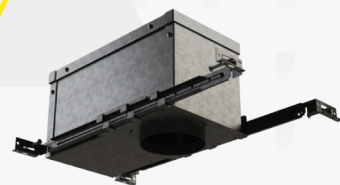
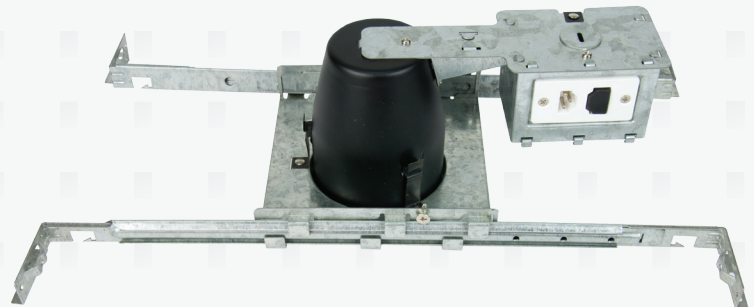
Specifications:

- Construction – Housing is made of Aluminum, Steel and Plastic – Die Cast Trims
- Power - 120V – Maybe used with MC Cable, Romex, Greenfield, and or C3I Interconnecting cables
- Light Source – Replaceable Xenon or LED Bulb
- Low Profile Design
- Remodel or New Construction
- IC rated can available
- Vapor Proof treams available



GU-3RH-C3I-120V

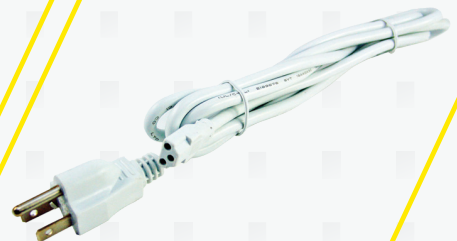
GU-3NC-HANGER



GU-3IC-CAN



GU-3FKO



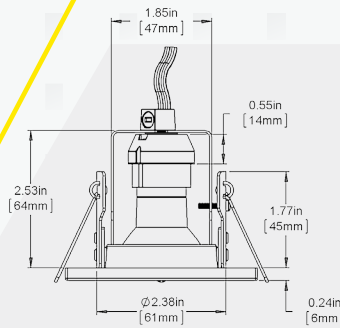
SLG-PC

120V GU-10 LED SPRING LOADED

SQUARE GU-10-LED

Single Swivel Light

- Does not require transformer
- Fully assembled and ready to plug in
- Includes a replaceable LED 5W GU-10
- Has 6 Ft. male polarized power cord
- Spring loaded
- 180 degree capability
- Fully Dimmable
- Available in 2700K, 4100K or 6400K color temperature
- Also available in other wattages
- Available in Brushed Chrome, Black, White and Chrome

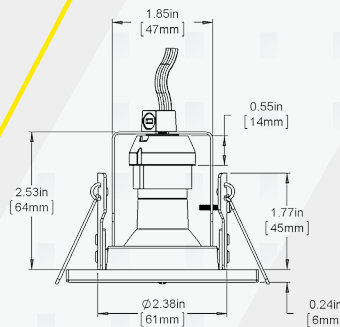


GUSQ-LED1050- BC

ROUND GU-10-LED

Single Swivel Light

- Does not require transformer
- Fully assembled and ready to plug in
- Includes a replaceable LED 7W GU-10
- Has 6 Ft. male polarized power cord
- Spring loaded
- 180 degree capability
- Fully Dimmable
- Available in 2700K, 4100K or 6400K color temperature
- Also available in other wattages
- Available in Brushed Chrome, Black, White and Chrome



GUSQ-LED1040-WH

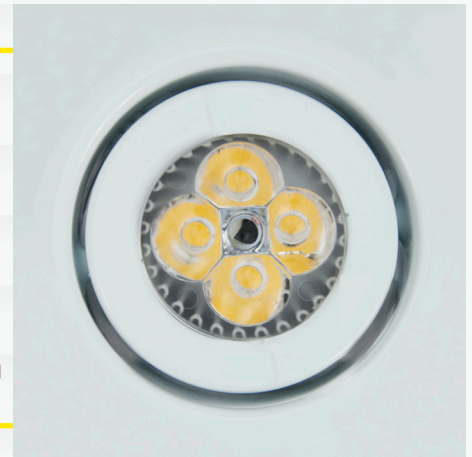
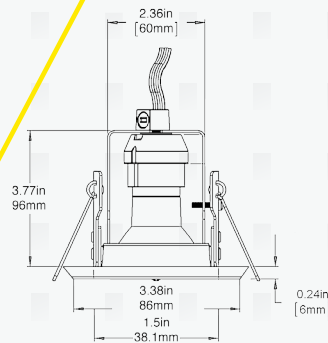


120V GU-CLED LED SPRING LOADED



GU-CLED SQUARE

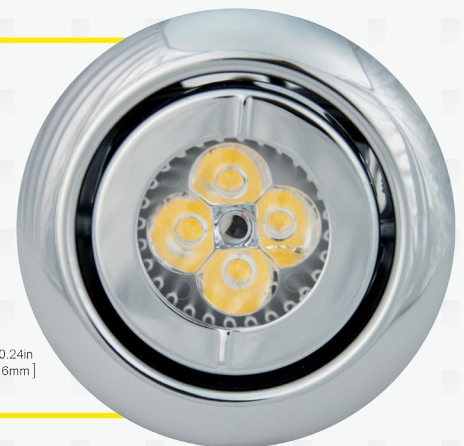
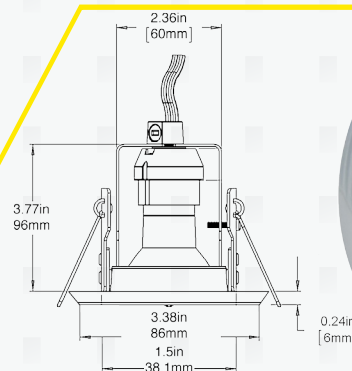
- Does not require a transformer
- Fully assembled and ready to plug in
- Includes a replaceable LED 7W GU-10
- Ideal for kitchen cabinets, wall units, store fixtures, and furniture (Murphy Beds)
- Has a 6FT male polarized power cord
- Spring loaded for a fast and easy installation
- Average bulb life: 30,000 Hrs (15 X longer than a halogen bulb)
- Has a sleek all metal design
- Has 180° swivel capability
- Electrical standard 120V AC 60Hz
- Fully Dimmable
- Available in 2700K, 4100K or 6400K color temperature
- Available in Brushed Chrome, Black, White and Chrome



GU-CLED-WH

GU-CLED ROUND

- Does not require a transformer
- Fully assembled and ready to plug in
- Includes a replaceable LED 5W GU-10
- Ideal for kitchen cabinets, wall units, store fixtures, and furniture (Murphy Beds)
- Has a 6FT male polarized power cord
- Spring loaded for a fast and easy installation
- Average bulb life: 30,000 Hrs (15 X longer than a halogen bulb)
- Has a sleek all metal design
- Has 180° swivel capability
- Electrical standard 120V AC 60Hz
- Fully Dimmable
- Available in 2700K, 4100K or 6400K color temperature
- Also available in other wattages
- Available in Brushed Chrome, Black, White and Chrome



GU-CLED-CH

120V XHL-LED INFINITY PUCK LIGHT

XHL-LED 120V PUCK LIGHT

Product Description:

Fully assembled and ready to plug in LED puck light. This low profile light is ideal for kitchen cabinets, wall units, store fixtures and furniture. It has dual mounting options which allows you to install either recessed or surface mounted. Their ability to interconnect in series up to 50 fixtures with one power cord allow for cleaner and more efficient installations.

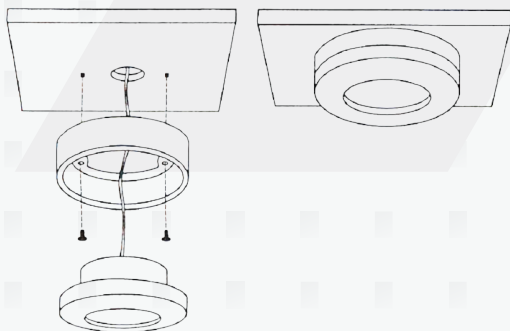


Specifications:

- Does not require a transformer
- Fully assembled and ready to plug in
- Has a protective frosted diffuser glass
- Fully dimmable
- All metal fixture
- Able to interconnect in a series
- Available in Warm White and Cool White
- Available in Brushed Chrome, Black, White and Chrome
- Power cord sold separately



XHL-LED-PC



XHL-LED-24-CC



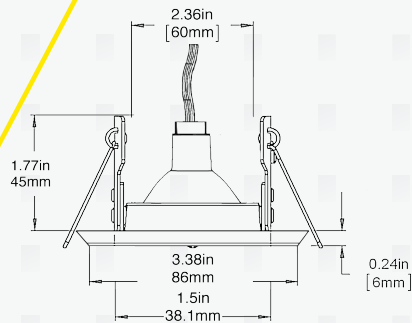


12 V SQHL & SHL LED SPRING LOADED SERIES

SQUARE SQHL-LED

Single Swivel Light

- Includes a replaceable LED 5W MR-16
- Low voltage and energy efficient
- Spring load for a fast and easy installation
- Fully dimmable
- Available in Brushed Chrome, Black, White and Chrome

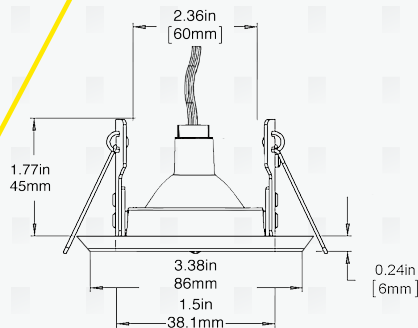


SQHL-LED-53BC

ROUND SHL-LED

Single Swivel Light

- Does not require transformer
- Fully assembled and ready to plug in
- Includes a replaceable LED 7W MR-16
- Has 6 Ft. male polarized power cord
- Spring loaded
- 180 degree capability
- Fully Dimmable
- Available in Brushed Chrome, Black, White and Chrome



SHL-LED-53WH

12 V MMSQ & MSQ SERIES SPRING LOADED SERIES

MMSQ-LED-16

- Includes a replaceable LED 5W MR-16 or 5W GU-10
- Low voltage and energy efficient
- Spring load for a fast and easy installation
- Fully dimmable
- Available in Brushed Chrome and White



MMSQ-LED-16

MSQ-LED-16

- Does not require transformer
- Fully assembled and ready to plug in
- Includes a replaceable LED 5W MR-16 or 5W GU-10
- Has 6 Ft. male polarized power cord
- Spring loaded
- 180 degree capability
- Fully Dimmable
- Available in Brushed Chrome and White



MSQ-LED-16

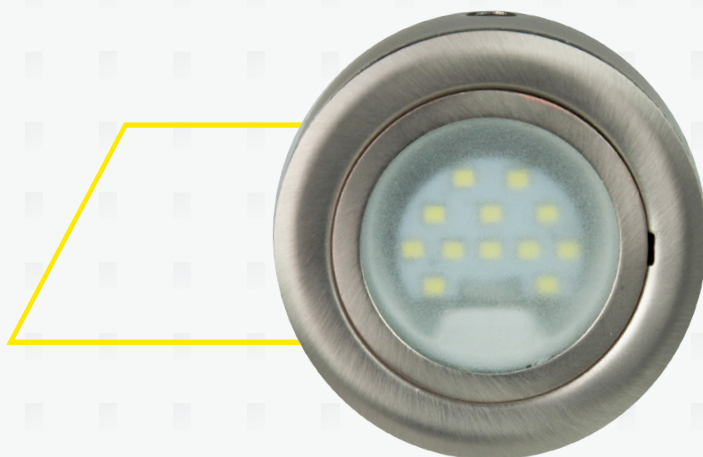




12 V XFHL-LED PUCK LIGHT SERIES

XFHL-LED

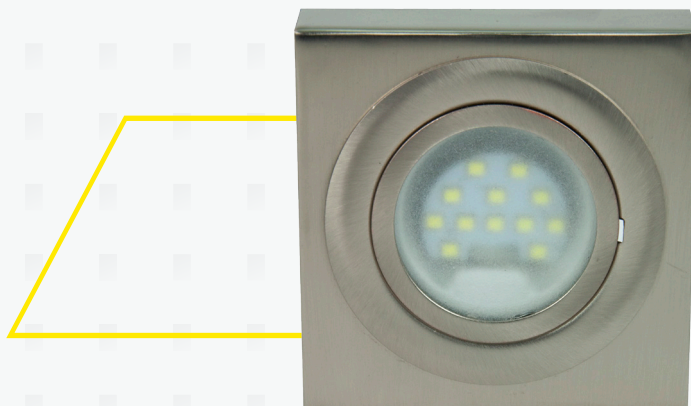
- Low Voltage and energy efficient
- Has a protective frosted diffuser glass
- Has dual mounting options; recessed or surface mounted
- LED jc-g4 bi-pin base
- Available in Brushed Chrome, White and Black



XFHL-LED

XFHL-SMSQ-LED

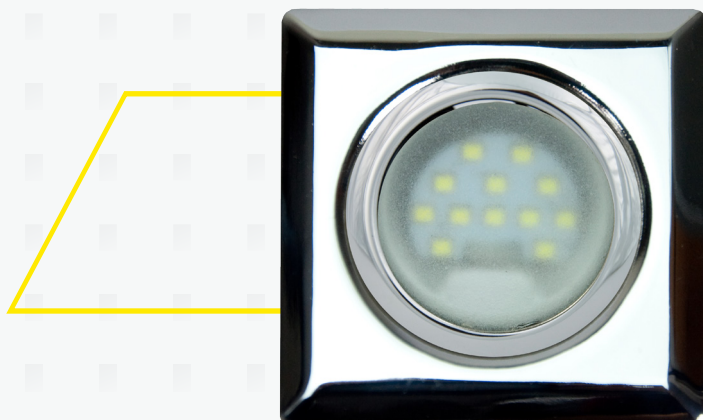
- Low Voltage and energy efficient
- Has a protective frosted diffuser glass
- Has dual mounting options; recessed or surface mounted
- LED jc-g4 bi-pin base
- Available in multiple finishes



XFHL-SMSQ-LED

XFHL-SQ-LED

- Low Voltage and energy efficient
- Has a protective frosted diffuser glass
- Has dual mounting options; recessed or surface mounted
- LED jc-g4 bi-pin base
- Available in multiple finishes



XFHL-SQ-LED

24 V LED BAR SERIES

LED LIGHT BAR

Product Description:

New aluminum L.E.D. light bar, the perfect low consumption super bright led slim line solution for low profile applications. Used widely in edge lighting, ceilings, light boxes and the fixture store display industries. This practical and easy to use light bar can be used to bring light to a variety of architectural applications and is very consumer friendly.

Specifications:

- Available in 5 sizes: 6 ,12 ,24 ,36 and 48"
- Aluminum Profile with diffuser
- Can be interconnected without additional wiring
- 24v system to allow for longer runs
- Available in 5000k and 3000k
- Includes mounting clips for easy installation
- Individual sizes include mounting clips and 6" connector cables

LED-BAR-48-3K-24V

LED-BAR-48-5K-24V



LED-BAR-36-3K-24V

LED-BAR-36-5K-24V

LED-BAR-24-3K-24V

LED-BAR-24-5K-24V

LED-BAR-12-3K-24V

LED-BAR-12-5K-24V

LED-BAR-6-3K-24V

LED-BAR-6-5K-24V

LED-BAR-6-EXT



AVAILABLE IN 6",
12", 24", 36" & 48"

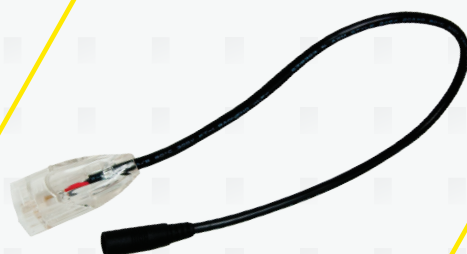


24 V LED BAR ACCESSORIES AND TRANSFORMERS



PART #	LENGTH	CURRENT	WATTAGE	LM	LED QUANTITY
LED-BAR-6-24V	6"	100MA	2.4W	280LM	7
LED-BAR-12-24V	12"	200MA	4.8W	560LM	14
LED-BAR-24-24V	24"	400MA	9.6W	1120LM	28
LED-BAR-36-24V	36"	600MA	14.4W	1680LM	42
LED-BAR-48-24V	48"	800MA	19.2W	2240LM	56

LED-BAR-2MDC-12



LED-BAR-DRIVER-12W-24V

LED-BAR-DRIVER-24W-24V

LED-BAR-DRIVER-36W-24V

LED-BAR-DRIVER-48W-24V

LED-BAR-DRIVER-72W-24V

LED-BAR-DRIVER-100W-24V

LED-BAR-3MDC-12

LED-BAR-5MDC-12



24 V LED TAPE LIGHT SERIES

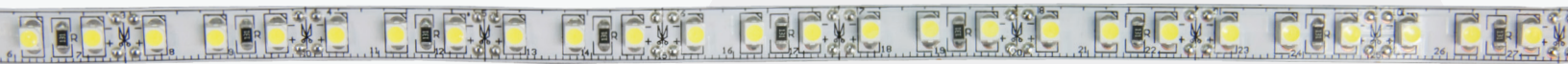
ETERNA LED TAPE LIGHT SERIES

Flexible LED strip lights (also known as tape lights) are among the most versatile of all energy-saving light sources. Use their adhesive backing to stick them under cabinets, desks, and shelves for easy indirect lighting or create cove lighting. LED tape use 12 or 24 volt power supplies.

LED product dimensions and names are normally generated by the packaging process. For example, '3528' means the product dimensions are 3.5*2.8mm.

The packaging processes of 2835 and 3528 are all based on Epistar and chips of similar dimensions. SMD 2835's is the latest design in LED diodes and more advanced than that of 3528.

2835's thermal dissipation system is substantially more efficient, because it has a larger heat sink on the back than the 3528 has no back heat sink at all. This enables 2835 LED to take higher amounts of current and generate more luminous flux.



LED-FLEX-24V-3K-3528-120 • LED-FLEX-24V-4K-3528-120 • LED-FLEX-24V-5K-3528-120



LED-FLEX-24V-3K-2835-120 • LED-FLEX-24V-4K-2835-120 • LED-FLEX-24V-5K-2835-120



LED-FLEX-24V-3K-3528-60 • LED-FLEX-24V-4K-3528-60 • LED-FLEX-24V-5K-3528-60



LED-FLEX-24V-3K-2835-60 • LED-FLEX-24V-4K-2835-60 • LED-FLEX-24V-5K-2835-60



LED-FLEX-24V-3K-5050-60 • LED-FLEX-24V-4K-5050-60 • LED-FLEX-24V-5K-5050-60



LED-FLEX-24V-3K-5050-60WP • LED-FLEX-24V-4K-5050-60WP • LED-FLEX-24V-5K-5050-60WP WATERPROOF



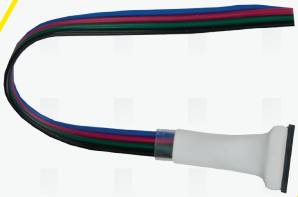
LED-FLEX-RGB-24V-5050-60





LED TAPE ACCESSORIES

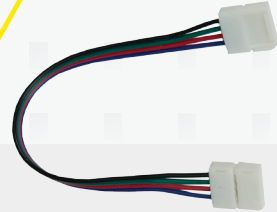
RGB TAPE ACCESSORIES



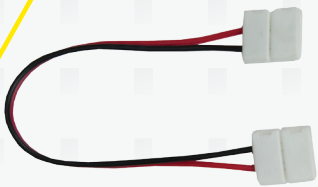
EBV-MF1W 10MM



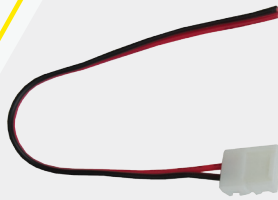
EBV-RGB10W1



EBV-RGB10W2



EBV-S8W2



EBV-S8W1



EBV-S8W2



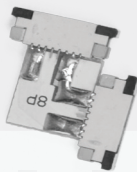
EBV-SF18W
EBV-SF110W



EBV-SF28W
EBV-SF210W



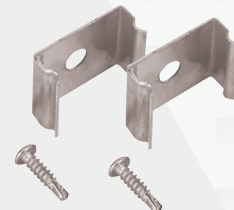
EBV-HWDCPF



EBV-S8W2
EBV-S10W2



EBV-SF28MM
EBV-SF210MM



U CHANNEL CLIP





LED BAR AND TAPE ACCESSORIES

TOUCH dimmer

- DC 12V/24V
- 72W at 12V
- 44W at 12V



LED-ITOUCH-DC

RF BASE RGB+WHITE CONTROLLER

- Wireless remote and downloadable app or IOS device or Android
- Voltage DC 5-24V
- 3 Channel Controller



MR-SC



MR-SC

WI-FI APP BASE RGB+WHITE CONTROLLER

- Wireless remote and downloadable app or IOS device or Android
- Voltage DC 5-24V
- 3 Channel Controller



MR-SC



MR-SC

LED Y ADAPTOR

- Female DC connectors to 2 male connectors
- For use with Model LED-BAR and Tape



LED-BAR-2MDC-12

LED Y ADAPTOR

- Female DC connectors to 3 male connectors
- For use with Model LED-BAR and Tape



LED-BAR-3MDC-12

12-24 TRANSFORMERS SERIES

ELECTRONIC POWER SUPPLIES

- Input Voltage 100 - 240V
- Output Voltage 24V
- Available in 150W



TR-LED-150-24

ELECTRONIC POWER SUPPLIES

- Input Voltage 100 - 240V
- Output Voltage 24V
- Available in 96W
- Available in 60W and 30W



TR-LED-96-24

ELECTRONIC PLUG IN AND DESKTOP POWER SUPPLIES

- Input Voltage 100 - 240V
- Output Voltage 12 - 24V
- Available in 6W, 12W, 24W, 36W, 48W, 60W, 72W



LED-BAR-PS-48W

ELECTRONIC PLUG IN AND DESKTOP POWER SUPPLIES

- Input Voltage 100 - 240V
- Output Voltage 12 - 24V
- Available in 6W, 12W, 24W, 36W, 48W, 60W, 72W



LED-BAR-PS-12W-24

ELECTRONIC PLUG IN AND DESKTOP POWER SUPPLIES

- Input: 100-240V 50~60Hz / Output: 12V/12W
- Max. Load: 12W / Min. Load: 1W
- Secondary Volt: 11.6VAC 20 Khz / Weight: 4 oz.
- Input Current: 450mA / Output Current: 1000mA
- Plug-in style transformer
- Transformer can be used to connect up to 9 - 1.25W fixtures
- For use with our 12V SHL or SQHL LED lights only



TRM-SHL-12W



12-24 TRANSFORMERS SERIES



LED DRIVERS

- For Models TR-LED-MAG-60-24, TR-LED-MAG-96-24, TR-LED-MAG-150-24, TR-LED-MAG-300-24
- Dimmable with any standard MLVTRIAC dimmer
- Dual protection - primary and secondary auto-reset circuit breakers
- Nema 3R Enclosure - Outdoor Use
- Class 2
- ETL Listed
- Certified to CSA Standard



LED DRIVERS

- For Models TR-LED-MAG-60-24, TR-LED-MAG-96-24, TR-LED-MAG-150-24, TR-LED-MAG-300-24
- Dimmable with any standard MLVTRIAC dimmer
- Dual protection - primary and secondary auto-reset circuit breakers
- Nema 3R Enclosure - Outdoor Use
- Class 2
- ETL Listed
- Certified to CSA Standard



LED DRIVERS

- For Models TR-LED-MAG-60-24, TR-LED-MAG-96-24, TR-LED-MAG-150-24, TR-LED-MAG-300-24
- Dimmable with any standard MLVTRIAC dimmer
- Dual protection - primary and secondary auto-reset circuit breakers
- Nema 3R Enclosure - Outdoor Use
- ETL Listed
- Certified to CSA Standard



LED DRIVERS

- For Models TR-LED-MAG-60-24, TR-LED-MAG-96-24, TR-LED-MAG-150-24, TR-LED-MAG-300-24
- Dimmable with any standard MLVTRIAC dimmer
- Dual protection - primary and secondary auto-reset circuit breakers
- Nema 3R Enclosure - Outdoor Use
- ETL Listed
- Certified to CSA Standard



LED T4 SLIM LINE SERIES FLUORESCENTS

**NOW AVAILABLE
IN 22W & 26W**

SL-28



SL-24



SL-20



SL-16



SL-12



SL-8



SL-6



MODEL # TYPE	LAMP TYPE	LAMP WATTS	LUMENS	L x W x H
SL-6 MG	F6T4	6W	300	10 3/8" x 3/4" x 1 9/16"
SL-8 MG	F8T4	8W	400	14 3/4" x 3/4" x 1 9/16"
SL-12MG	F12T4	12W	600	18 1/2" x 3/4" x 1 9/16"
SL-16MG	F16T4	16W	900	20 1/4" x 3/4" x 1 9/16"
SL-20MG	F20T4	20W	1250	22" x 3/4" x 1 9/16"
SL-22MG	F22T4	22W	1350	30" x 3/4" x 1 9/16"
SL-24MG	F24T4	24W	1800	35 1/2" x 3/4" x 1 9/16"
SL-26MG	F26T4	26W	2500	42" x 3/4" x 1 9/16"
SL-28MG	F28T4	28W	2900	47 1/4" x 3/4" x 1 9/16"

FEATURES:

- Has a slim all metal design
- Available in 9 sizes and wattages
- Includes a 6 FT grounded C3I modular power cord
- Includes a replaceable T-4 Lamp, available in 2700K(WW), 4100K(CW), 6400K(DX)
- Includes a protective plastic diffuser
- Includes (2) metal mounting brackets and screws
- Can be interconnected without additional wiring by using our 6" grounded flexible connector and direct connector
- C3I allows for the T4 Slim Line Series to be interconnected with the T-5 Slim Line Series
- Can be hardwired with our hard wire box (model # HW-T54 & HW-T84 note HW-T84 also has a convenience outlet)
- Fixture has a slim design ideal for cove lighting, under kitchen cabinets, store fixtures and display.
- Fixture has no RF interference
- Additional C3I accessories are available
- Electrical standard 120V AC 50-60Hz





SL-T5 SLIM LINE FLUORESCENTS

**LED T5 BULBS
AVAILABLE**



MODEL # TYPE	LAMP TYPE	LAMP WATTS	LUMENS	L x W x H
SL-6 T5	F6T5	6W	300	10 3/8" x 3/4" x 2"
SL-8 T5	F8T5	8W	400	13 3/8" x 3/4" x 2"
SL-13T5	F13T5	13W	600	22 3/8" x 3/4" x 2"
SL-14T5	F14T5	14W	900	23" x 3/4" x 2"
SL-21T5	F21T5	21W	1250	35 1/2" x 3/4" x 2"
SL-28T5	F28T5	28W	2900	47 1/4" x 3/4" x 2"
SL-35T5	F35T5	35W	3650	59" x 3/4" x 2"

FEATURES:

- Has a slim all metal design
- Available in 7 sizes and wattages
- Includes a 6 FT grounded C3I modular power cord
- Includes a replaceable T-5 lamp, available in 2700K(WW), 4100K(CW), 6400K(DX)
- Includes a protective plastic diffuser
- Includes (2) metal mounting brackets and screws
- Can be interconnected without additional wiring by using our 6" grounded flexible connector and direct connector
- C3I allows for the T5 Slim Line Series to be interconnected with the T-4 Slim Line Series
- Can be hardwired with our hard wire box (model # HW-T54 & HW-T84 note HW-T84 also has a convenience outlet)
- Fixture has a slim design ideal for cove lighting, under kitchen cabinets, store fixtures and display.
- Has no RF interference
- Additional C3I accessories are available
- Electrical standard 120V AC 50-60Hz

LED-T8 SLIM LINE SERIES



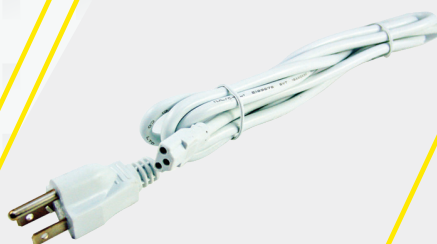
MODEL # TYPE	LAMP TYPE	LAMP WATTS	LUMENS	L x W x H
SLG-LED-6	F6T8	6W	600	18" x 13/4" x 23/4"
SLG-LED-10	F10T8	10W	900	24" x 13/4" x 23/4"
SLG-LED-14	F14T8	14W	1400	36" x 13/4" x 23/4"
SLG-LED-18	F18T8	18W	1900	48" x 13/4" x 23/4"

FEATURES:

- Has a slim all steel body
- Includes a 6 FT grounded C3I modular power cord
- Includes a replaceable 6000K T8 LED Lamp
- Saves up to 70% electricity compared to incandescent fixtures
- Includes a clear protective plastic lens and (2) metal screws for a quick and easy installation
- Can be interconnected without additional wiring by using our 6" grounded flexible connector or direct connector (all included)
- Fixture's grounded modular C3I outlet allows you to interconnect up to 10 fixtures of the 6W and 10W and 20 fixtures of the 14W and 18W
- Fixture can be hardwired with available knockout for Bx connector or can be installed with our hard wire box model # HW-T84
- Fixture has a slim design ideal for concealing under kitchen cabinets, wall units, store fixtures and display, furniture, and cove lighting
- Fixture has no RF interference
- Additional C3I accessories are available



GU-3FKO



SLG-PC



C3I COMPATIBLE ACCESSORIES



HW-T84/54 Hardwire Junction Box for T-4, T-5 & T-8 Series

- Multi tap durable plastic housing
- On/Off master switch
- Easy installation with supplied mounting screws
- Grounded modular female outlet for interconnecting T-4 and T5 series
- Grounded convenience outlet for T-8 series and any type of under counter lighting not exceeding 5 amps
- Electrical standard 120V AC – 600W -5A

Length - 3 3/4"
Height - 1 1/4"
Width - 2 1/4"



HW-T54

T4 & T5 Grounded Flexible Interconnecting Cables

SLE-06G	6" Interconnecting cable
SLE-12G	12" Interconnecting cable
SLE-24G	24" Interconnecting cable
SLE-36G	36" Interconnecting cable
SLE-48G	48" Interconnecting cable
SLE-72G	72" Interconnecting cable
SLG-PC	72" Grounded power cord
SLG-PC90	90° 72" Grounded power cord

Length - 3 5/8"
Height - 1 3/4"
Width - 2 1/4"



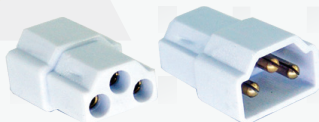
HW-T84



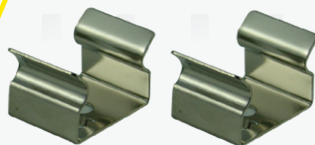
SLE-06G



SLG-PC



SLC-C



SLC-U



SLC-L

LED MILLWORK LIGHTING ACCESSORIES

10" Ceramic Socket

- Male molex connector allows you to convert almost every available trim to our plug-in style transformer system
- For use with 12V MR-11 or MR-16 bulbs



MR-SC

SPT-1 Five Light Harness

- 1 Male and 5 Female molex connectors allows you to connect up to 5 LED MR-16's
- For use with Model SHL-LED in conjunction with transformer TRM-LPL-12W



5LH-M2F

SPT-1 Transformer Extension Cord

- Male and female molex connectors allow you to go 6FT from transformer to light.
- For use with Model HL/SHL/MRL/SQHL in conjunction with transformer TR-60/80/105/150



EXT-6FC

LED Three Light Distribution Hub

- Female DC connectors allow you to go 6FT from transformer to light.
- For use with Model XFHL Series



LED-DIS3-DC

IR DOOR SENSOR SWITCH

- DC 12V 25W Max
- DC 24V 50W Max



DS-S-12/24

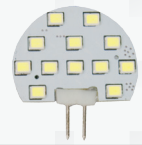


ETERNA BULBS SERIES



LED BULBS

WATTS	VOLTS	TYPE	FINISH	AVG.HRS	LUMENS	KELVIN
2.2W	12V	JC-G4	SMD	30000	200	3K,4K,5K



LED-SMD-JCG4-3K

WATTS	VOLTS	TYPE	FINISH	AVG.HRS	LUMENS	KELVIN
5W	120V	GU-10	COB	30000	550	3K,4K,5K



LED-COB-GU-5W-3K

WATTS	VOLTS	TYPE	FINISH	AVG.HRS	LUMENS	KELVIN
5W	12V	MR-16	COB	30000	550	3K,4K,5K



LED-COB-MR-5W-3K

WATTS	VOLTS	TYPE	FINISH	AVG.HRS	LUMENS	KELVIN
5W	120V	GU-10	SMD	30000	350	3K,4K,5K



E-GU-LED-5W-3K

WATTS	VOLTS	TYPE	FINISH	AVG.HRS	LUMENS	KELVIN
5W	12V	MR-16	SMD	30000	350	3K,4K,5K



E-MR-LED-5W-3K

WATTS	VOLTS	TYPE	FINISH	AVG.HRS	LUMENS	KELVIN
7W	120V	GU-10	SMD	30000	450	3K,4K,5K



E-GU-LED-7W-3K

WATTS	VOLTS	TYPE	FINISH	AVG.HRS	LUMENS	KELVIN
7W	12V	JMR-16	SMD	30000	450	3K,4K,5K



E-MR-LED-7W-3K

SORAA BULBS SERIES



Soraa's MR16 revolutionized the market for this compact lamp, a critical tool for accent lighting in restaurants, homes, and hospitality applications. For the first time, an LED lamp achieved the single source, perfect color quality, and high CBCP of a halogen lamp.

The VIVID SERIES: Our full-spectrum series brings you both VP3 VIVID COLOR (CRI-95, R9-95) and VP3 NATURAL WHITE Technology, with market-leading CBCP.

The PREMIUM SERIES: Our highest CBCP series, which also features VP3 NATURAL WHITE technology.

ALL SORAA LAMPS FEATURE

- GaN on GaN™ technology for small, bright point sources
- POINT SOURCE OPTICS for uniform and high intensity beams
- VP3 technology for perfect and consistent rendering of colors and whites
- SORAA SNAP SYSTEM compatibility opens up infinite design possibilities
- Enclosed fixture compatibility allows operation in damp or outdoor locations
- Rated life of 35,000 hours



FEATURES AND BENEFITS OF SORAA'S GU10

- Narrow spot CBCPs of 6000Cd at 95CRI and 7750Cd at 80CRI, not offered anywhere else in the market
- DIMMABLE, and tested with a wide range of dimmers
- Available in 120V and 230V configurations
- Standard GU10 form factor, IEC compliant
- Available in 2700K, 3000K, 4000K, 5000K, in beam angles of 10d, 25d, 36d and 60d



TERMS AND CONDITIONS



1. New Accounts – There is no minimum order amount to establish a new account with Eterna, however accounts will be deactivated after 6 months of inactivity. Immediate activation with an order requires a credit card purchase (all major cards accepted). A credit application is required to establish terms.
2. Terms / Credit – Methods of payment that are accepted are company check, Visa, MasterCard, Discover, American Express, or cash (local customers only). Our terms are 30days-net.
3. Minimum Invoice – We will be happy to place your order for any amount, however to avoid additional fees (see item #5a) our minimum order is \$100.00.
4. Freight / Shipping Policy – Warehouse Shipments:
 - a. We can ship your merchandise any way necessary. Our “free freight” policy is effective on orders as follows: \$1500 to So.FL; \$2000 to LA, MS, AL, GA, SC, No.FL; \$3000 to TX, NM, CO, NE, KS, OK, IA, MO, AR, IL, IN, OH, KY, TN, NC, VA, WV, PA, NY, DC; \$3800 to All Other Areas of the US and Canada.
5. Additional Fees –
 - a. Minimum Order Fee – a \$15.00 fee will be charged for your order that is less than \$100.00
 - b. COD Fee: Original COD orders carry a minimum \$10.00 COD fee. COD fees can be avoided by using accepted Credit Cards (see terms/credit).
 - c. NSF Fees – a \$40.00 fee will be charged, in addition to any bank or associated charges, for any check that comes back to us as un-payable.
6. Shipping – Eterna Lighting maintains a local (Miami FL) delivery fleet for local deliveries. Where appropriate Eterna will ship via UPS or other forms of transportation to deliver your order in a timely manner.
7. Local Pick-Up – During normal business hours we can allow limited pick-up at our warehouse location in Miami FL; pick-ups will be exempt from our normal Minimum Order Fee (see #5a).
8. Delivery Dates – Normally we can provide next-day delivery upon request, and if order is received before 12 noon. All shipping dates however are estimates and should not be deemed to represent a fixed or guaranteed timeframe for delivery.
9. Claims – Goods in transit travel at the risk of the purchaser. Damage and/or shortage must be noted upon receipt and be countersigned by the delivering carrier's agent. We will not responsible for loss or damage in transit.
10. Credit Requests / Returned Goods – All goods come with a one year warranty. Returns of damaged or defective goods are accepted so long as all parts/items available are returned to our warehouse. You can request a RGA from our office; a full or applicable credit will be charged back to your account once the part/item(s) has been received, less a 25% restocking fee (excluding shipping charges).
11. Taxes – Applicable state and local taxes on merchandise will be charged
12. Samples – We would be happy to provide you with a sample(s) of our product(s). You will be charged the normal price of the item, plus shipping charges, with the stipulation that you have 30 days to return the item, in it's original packaging, to us for a refund of your purchase price, less shipping fee. After 30 days there will be no refund available. Note: our minimum order fee will be waived on sample orders.
13. Ordering – Place your order by any of these convenient methods
 - a. Phone: 888.513.3346 or 305.513.3336
 - b. Fax: 305.513.3662 or 888.513.3662
 - c. Email: sales@eternalighting.com
14. Stock – Our policy is to maintain adequate stock of all products offered, however we cannot guarantee availability of any particular inventory at any given time.
15. Invoicing – Eterna Lighting can invoice you using standard procedures, summaries, by credit card, via email, US Mail or Fax.
16. Contacts –
 - a. Our Address: 5065 NW 74th Ave Bay 8, Miami FL 33166
 - b. Our Telephone contacts : 305.513.3336 or 888.513.3346 or fax 305.513.3662 or 888.513.3662



